

LED Deck & Eave Light Circle

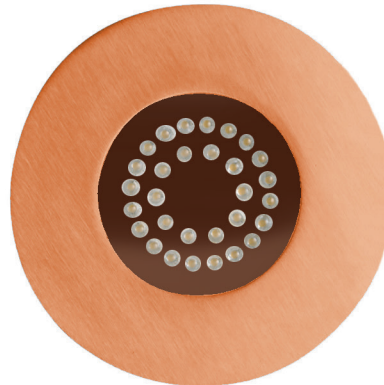


SPECIFICATIONS

- Materials:** Casing: Solid Copper
Face: Weatherproof premium quality acrylic
- Input:** Low Voltage 12 V DC (regulated)
- Weatherproof Rating:** IP 68
- Warranty:** 3 years for electrics.
10 years for Solid Copper casing
- LED type:** State of art NICHIA 5mm
Lights are polarity sensitive
- Colours:** Cool White Typical 5300 K
Warm White Typical 3000 K
- Wiring:** 240V to the transformer, low voltage to the fitting. If more than one item is wired they must be connected in parallel

FEATURES

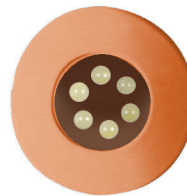
- Energy efficient
- 80000+ Hours
- No globes to change
- Ambient light
- Solid state technology
- Non corrosive
- No condensation
- Ideal for coastal environment
- No UV to attract insects
- Cool to touch
- Easy to install, easy to move



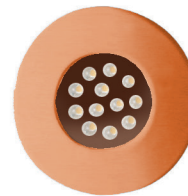
Model shown:
LTDC30



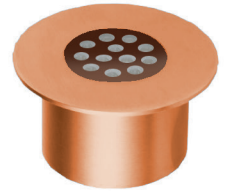
Model shown:
LTDC33



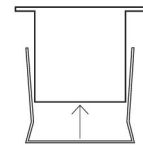
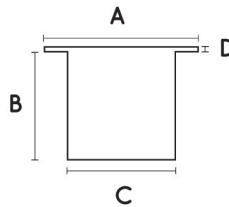
Model shown:
LTDC36



Model shown:
LTDC12



Profile is the same
for LTDC33, 6 and 12



Press fixing clip over
bottom of light casing
(comes with models 3, 6 & 12 only)



This light system contains non replaceable parts. Do not attempt to force open the light.

Indoor / Outdoor

model	dimensions				current	current	lens
	A	B	C	D	watts	mA(max)	degrees
LTDC33	55mm	35mm	38mm	2mm	0.25	20	45
LTDC36	55mm	35mm	38mm	2mm	0.5	40	45
LTDC12	70mm	35mm	50mm	2mm	1	80	45
LTDC30	115mm	100mm	77mm	2.5mm	2.5	80	45

Note: 1 Amp = 1000 milliamps (mA).

Polarity sensitive.

AUSTRALIAN MADE

1300 384 860
 75a Bondi Road, Bondi
 NSW 2026 Australia
 info@bondilights.com.au
 bondilights.com.au

Specifications subject to change without notice