

LED Deck & Eave Light Square



SPECIFICATIONS

Materials: Casing: Solid Copper
Face: Weatherproof premium quality acrylic

Input: Low Voltage 12 V DC (regulated)

Weatherproof Rating:
IP 68

Warranty: 3 years for electrics.
10 years for Solid Copper casing

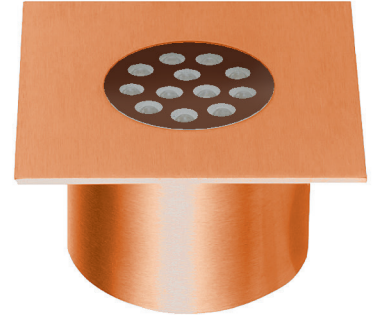
LED type: State of art NICHIA 5mm
Lights are polarity sensitive

Colours: Cool White Typical 5300 K
Warm White Typical 3000 K

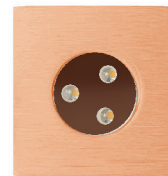
Wiring: 240V to the transformer, low voltage to the fitting. If more than one item is wired they must be connected in parallel



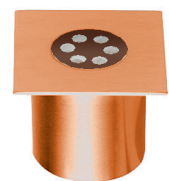
Model shown:
LTDSCM12



Model shown:
LTDSCS6

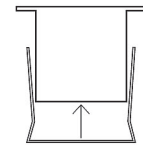
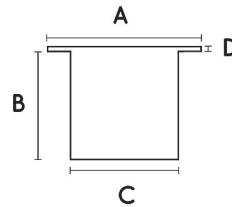


Model shown:
LTDSCS3



FEATURES

- Energy efficient
- 80000+ Hours
- No globes to change
- Ambient light
- Solid state technology
- Non corrosive
- No condensation
- Ideal for coastal environment
- No UV to attract insects
- Cool to touch
- Easy to install, easy to move



Press fixing clip over bottom of light casing (comes with models 3, 6 & 12 only)



This light system contains non replaceable parts. Do not attempt to force open the light.

Indoor / Outdoor

model	dimensions				current	current	lens
	A	B	C	D	watts	mA(max)	degrees
LTDSCS3	50x50mm	35mm	38mm	2mm	0.25	20	45
LTDSCS6	50x50mm	35mm	38mm	2mm	0.5	40	45
LTDSCM12	70x70mm	35mm	50mm	2mm	1	80	45

Note: 1 Amp = 1000 milliamps (mA).

Polarity sensitive.

AUSTRALIAN MADE

1300 384 860
75a Bondi Road, Bondi
NSW 2026 Australia
info@bondilights.com.au
bondilights.com.au

Specifications subject to change without notice