

Piccolo 40 with Hat -Recessed



Designed in collaboration with
LA Lounge Lighting Architects

SPECIFICATIONS

Materials: Casing: Solid Copper.

Input: Low Voltage 12 V DC
(regulated)

Weatherproof Rating:
IP 67

Warranty: 2 years for electrics.
10 years for Solid Copper casing

LED type: Built in LED
Lights are polarity sensitive

Colours: Warm White Typical 3000 K

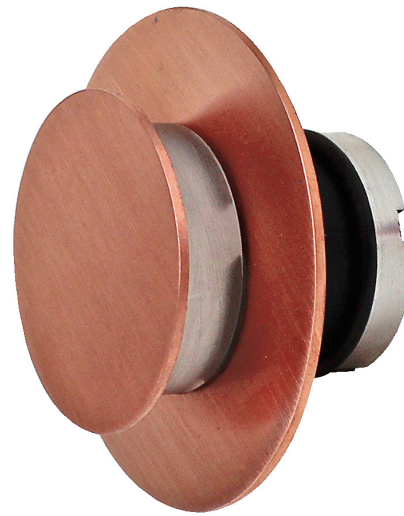
Wiring: 240V to the transformer, low
voltage to the fitting. If more than
one item is wired they must be
connected in parallel

Cut Out: Ø41mm. To be installed in a
40mm grey conduit

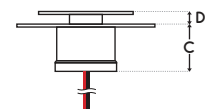
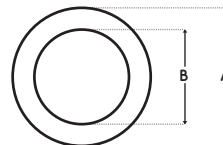
Depth: 33mm. Allow 10mm more

FEATURES

Energy efficient
Ambient light
Solid state technology
Non corrosive
No condensation
Ideal for coastal environment



Top view



Front view

Indoor / Outdoor

model	dimensions				current	lens
	A	B	C	D	watts	degrees
PIC40-COP-HAT	70mm	47mm	25mm	8mm	3	30

Polarity sensitive.

AUSTRALIAN MADE

1300 384 860
75a Bondi Road, Bondi
NSW 2026 Australia
info@bondilights.com.au
bondilights.com.au

Specifications subject to change without notice